



AX7800 Tri-Band Wi-Fi 6 Router

Faster. Broader. Unstoppable.



Archer AX95



Ultimate Tri-Band
Speed up to 7.8 Gbps[†]



Connect More Devices
8 Stream + OFDMA + MU-MIMO[†]



Maximized Coverage
8 High-Performance Antennas



Top-Notch Processing
1.7 GHz Quad-Core CPU

Highlights

Wi-Fi 6⁺ Faster. Broader. Unstoppable.

The Archer AX95, based on the next generation Wi-Fi 6 (802.11ax) technology, takes your Wi-Fi to the next level while being backwards compatible with previous generations (802.11a/b/g/n/ac standards) Wi-Fi.



Unrivaled Tri-Band Speed

1024-QAM and HE160 boost overall speeds up to an incredible 7800 Mbps.[†]



8 Streams for More Devices

Eight Wi-Fi streams utilize OFDMA and MU-MIMO to bring more available bandwidth and less congestion for all devices[‡]



Save Smart Devices' Power

Conserve the power of your mobile devices by scheduling the connection time of battery-powered devices with Target Wake Time.



Backwards Compatible

Take your Wi-Fi to the next level while being backwards compatible with existing 802.11a/b/g/n/ac Wi-Fi standards.

TP-Link HomeShield

TP-Link's premium security services keep your home network safe with cutting-edge features for network and IoT protection.[^]



Network Protection

Detect cyber threats to keep your privacy and connected devices well protected.



Quality of Service (QoS)

Prioritize your bandwidth needs to get a better networking experience.



Parental Controls

Manage online time and block inappropriate content to control your family's digital habits.



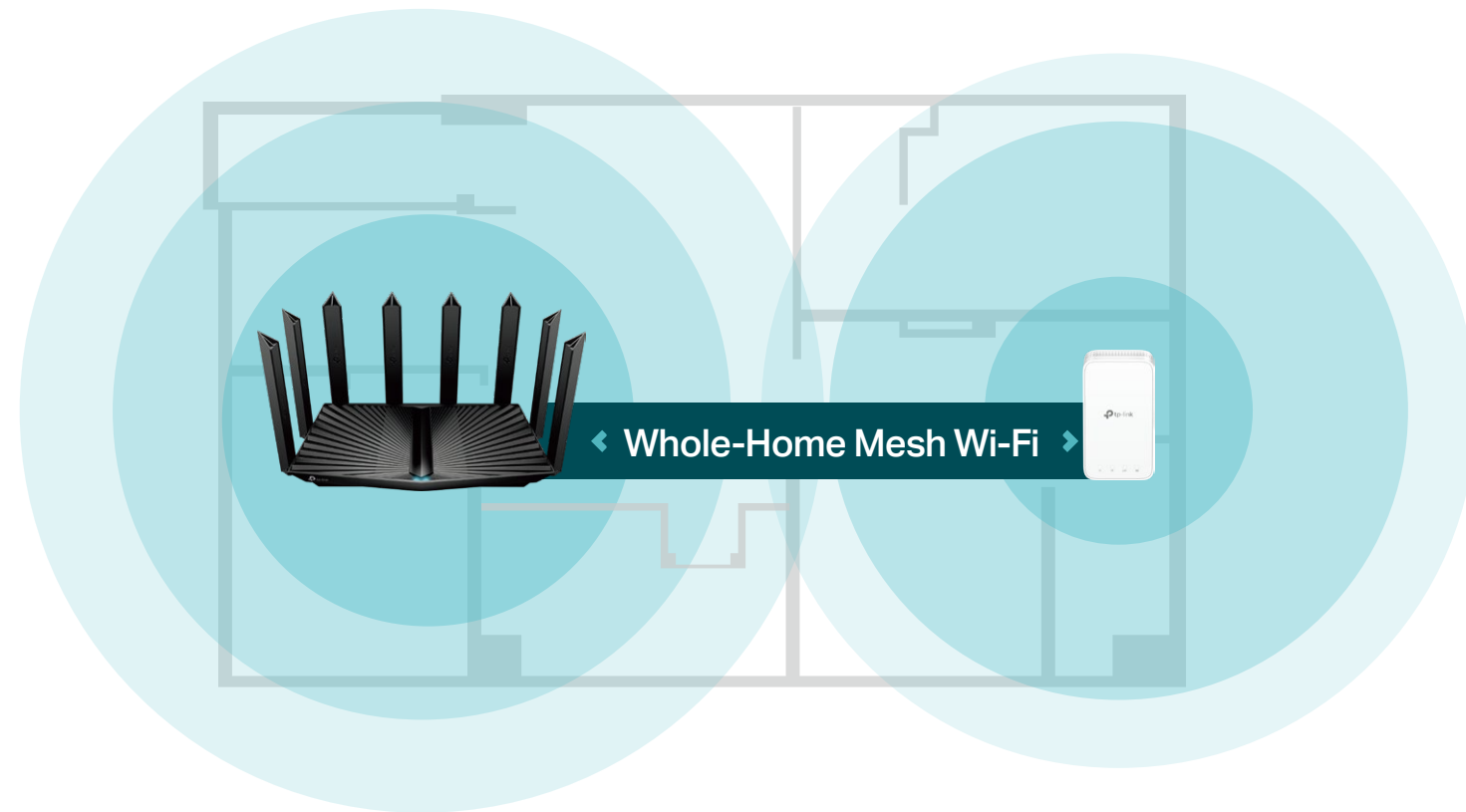
Comprehensive Reports

Gain full statistics and insights to help you understand your home network.

Highlights

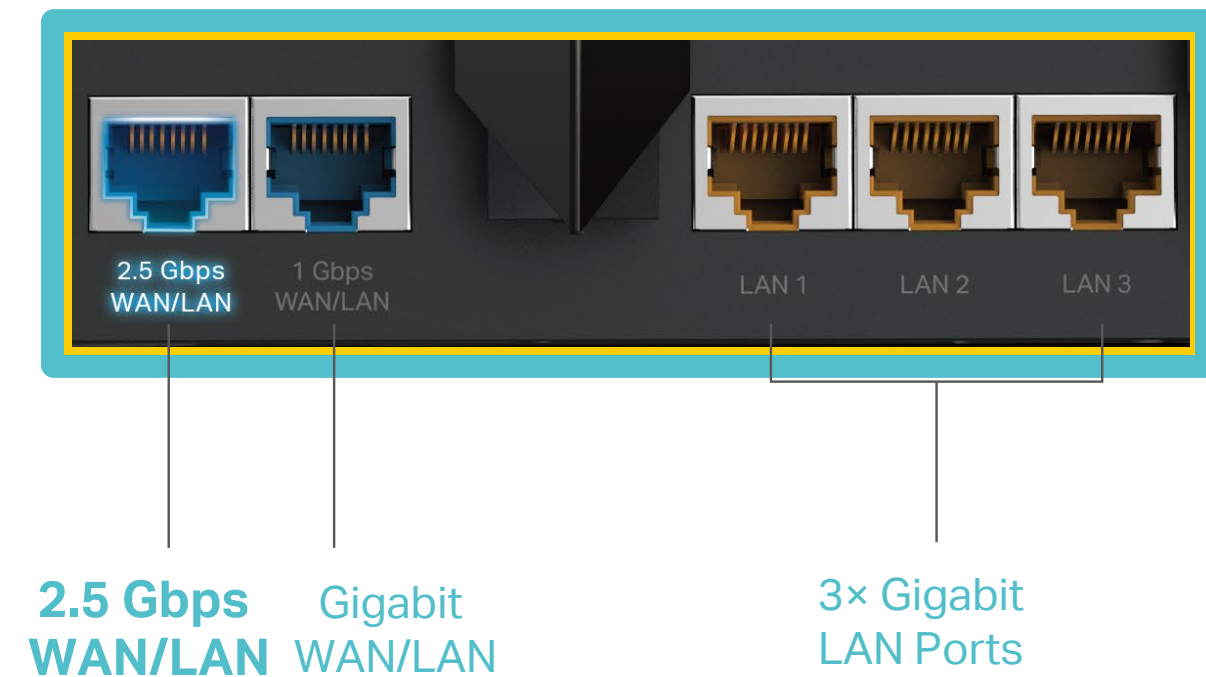
Flexible Whole-Home Wi-Fi

Eight high-performance antennas and Beamforming deliver broad coverage. Furthermore, Archer AX95 supports OneMesh™ to form seamless whole-home coverage, preventing drops and lag when moving between signals.



Multi-Gig Internet Connection

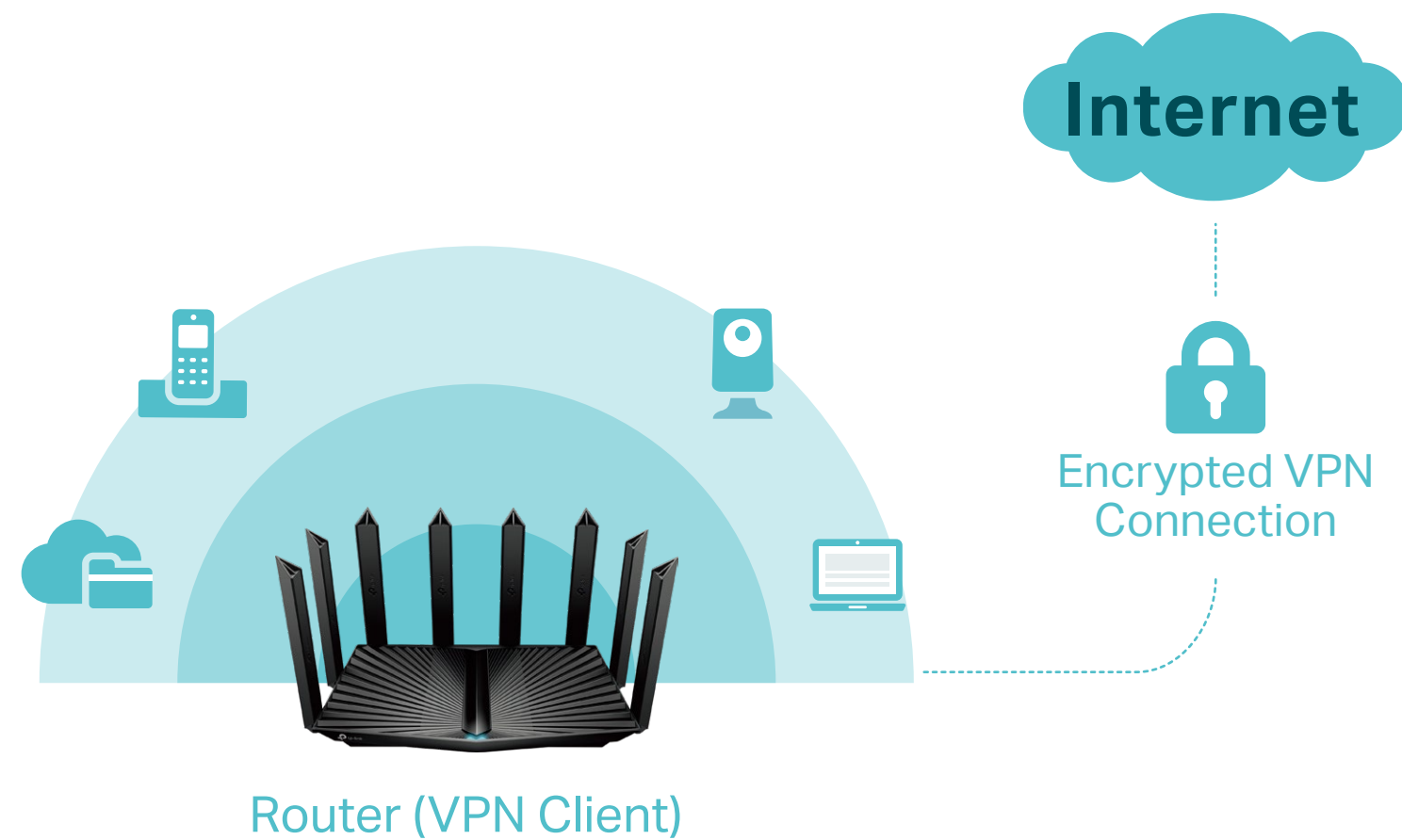
A 2.5 Gbps port and 1 Gbps port make full use of gigabit speeds from your local ISP. Break through the 1G bottleneck and drive your devices to peak performance. WAN/LAN support gives you remarkable flexibility to tailor both ports to fit your network's needs.[§]



Highlights

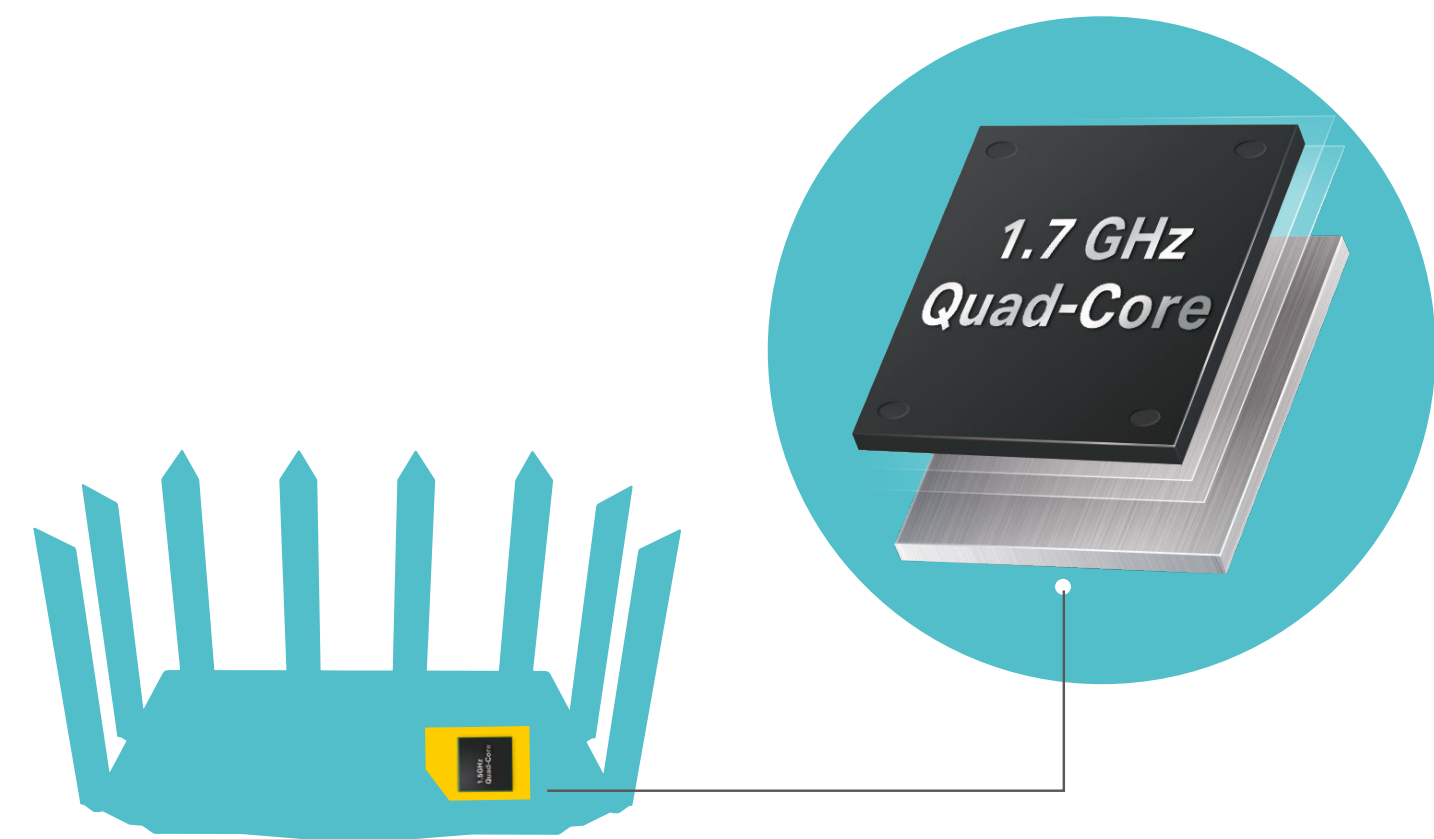
VPN Client Supported

With VPN client support, AX95 allows specified devices in your home network to access remote VPN servers without needing to install VPN software on every device. AX95 can also run both the VPN and ordinary internet connections at the same time, delivering security and flexibility.



Powerful Processing

A powerful 1.7 GHz quad-core CPU powers through multiple complex tasks and demanding applications with ease. Its processing power minimizes internal latency to keep your connections fast and uninterrupted.



Features



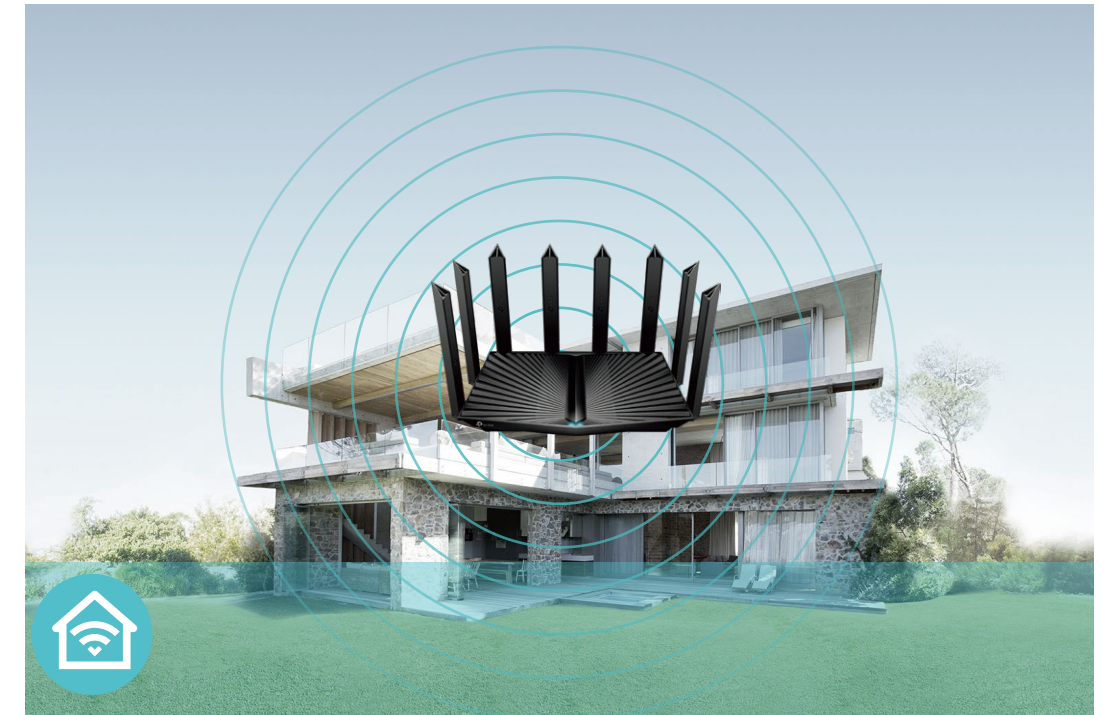
Unmatched Speeds

- **Ultimate AX7800 Tri-Band Speed** – 7.8 Gbps Wi-Fi for faster browsing, streaming, and downloading—all at the same time.†
- **Wi-Fi 6 Technology** – Wi-Fi 6 (802.11ax) features advanced technologies, including OFDMA, HE160, and 1024-QAM, drastically increasing the speed and efficiency.‡
- **160 MHz Channel** – Double the data at peak transmission time on a single stream.†
- **8 Streams** – More simultaneous connections and capability.
- **Smart Connect** – Intelligently assigns each device to the best Wi-Fi band for optimal performance.
- **Multi-Gig Internet Connection** – A 2.5 Gbps port and 1 Gbps port make full use of gigabit speeds from your local ISP. Break through the 1G bottleneck and drive your devices to peak performance.



High Capacity and Reliable Connections

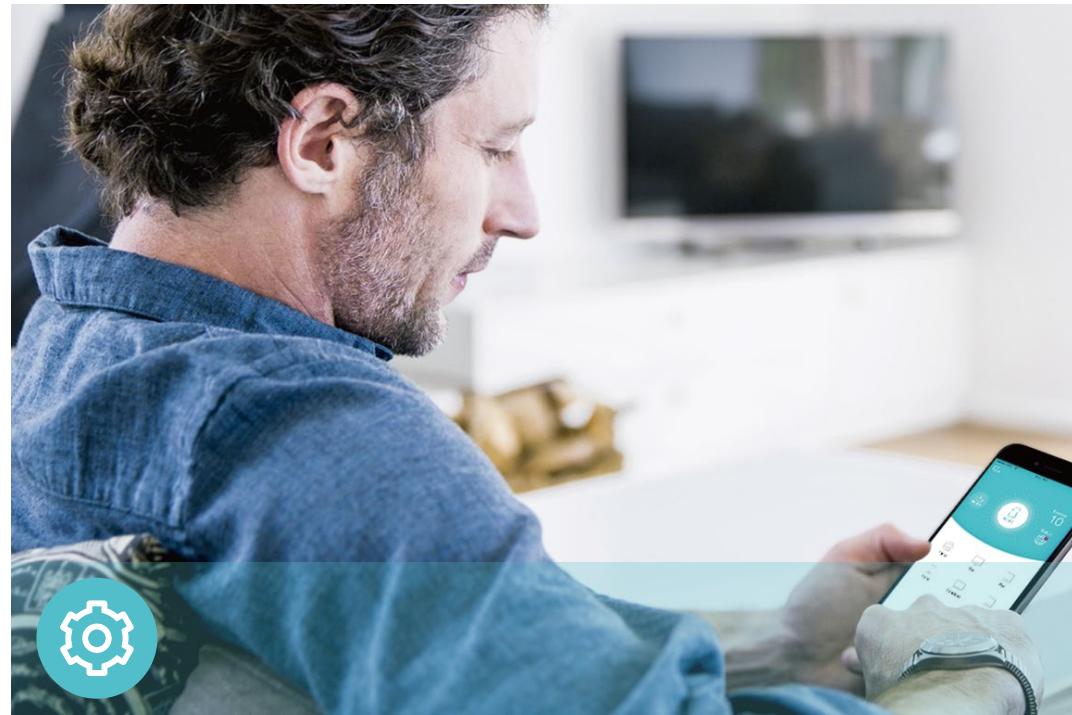
- **Powerful Processing** – A 1.7 GHz Quad-Core CPU provides the processing ability to handle enormous data throughput and minimizes the lag within your home network.
- **Connect More, Stay Fast** – Supports OFDMA to reduce congestion and quadruple your average throughput.§
- **MU-MIMO and 8-Stream** – Simultaneously sends data to multiple devices for faster speed, offering 4× larger capacity up to 200+ clients.†
- **Airtime Fairness** – Balances bandwidth of connected devices to improve overall throughput and efficiency.



Broad Wi-Fi Range

- **Ultimate Range Wi-Fi** – Eight high-gain external antennas and 8× high-power FEM deliver a Wi-Fi signal to every corner of your home, making all of your connections more efficient and stable.
- **Beamforming Technology** – Concentrates Wi-Fi signals towards individual devices to ensure stronger connections.
- **Seamless OneMesh network** – Transfer between signals without any drops or lag and manage your whole network using a centralized panel.

Features



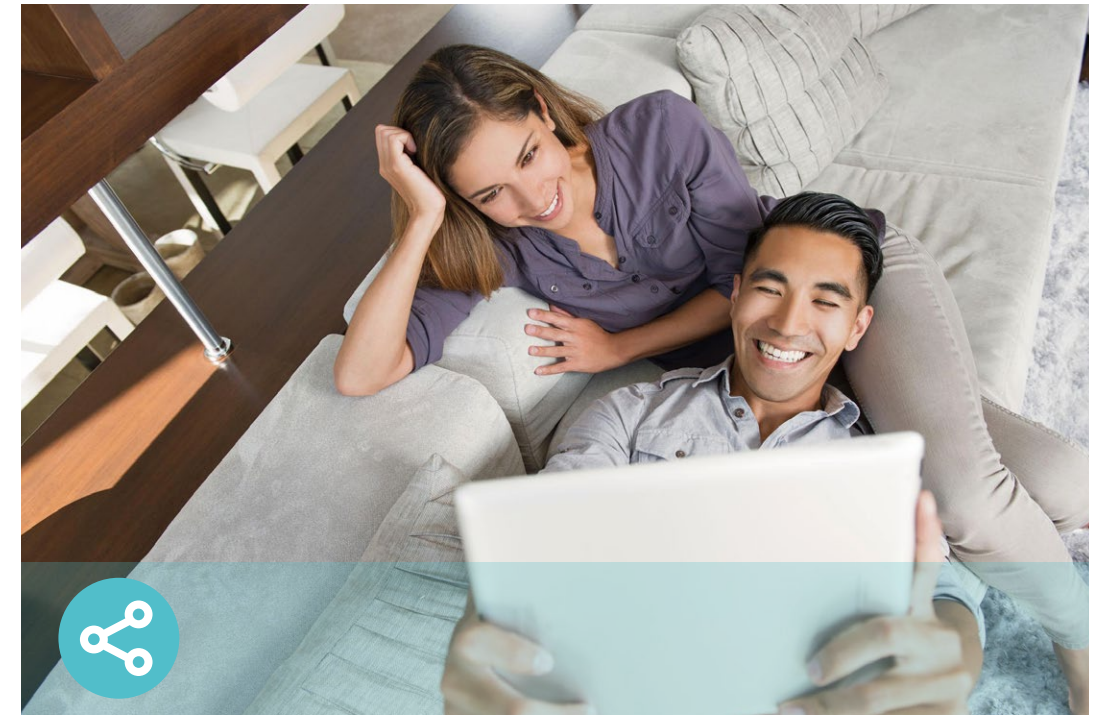
Ease of Use

- Hassle-free Management with Tether App – Network management is made easy with the TP-Link Tether app, available on any Android and iOS device.
- Intuitive Web UI – Ensures quick and simple installation without hassle.
- WPS (Wi-Fi Protected Setup) – Help you to quickly and securely connect your devices to the router's network with a tap.
- Backwards Compatible – Take your Wi-Fi to the next level while being backwards compatible with existing 802.11 a/b/g/n/ac Wi-Fi standards.
- Works with Amazon Alexa and Google Assistant – Utilize Amazon Alexa and Google Assistant to control everything via voice commands to enjoy truly intelligent life.



Robust Security

- HomeShield – TP-Link's premium security services keep your home network safe with cutting-edge features for network and IoT protection.*
- Parental Controls – Manage online time and block inappropriate content to control your family's digital habits.
- Guest Network – Provides separate access for guests to secure the home network.
- Advanced WPA3 Encryptions – The latest WiFi security protocol, WPA3, brings new capabilities to improve cybersecurity in personal networks.**
- Access Control – Establishes a whitelist or blacklist to allow or restrict certain devices to access the internet.



Value-Added Features

- USB 3.0 and USB 2.0 Ports – Connect external storage devices to rapidly share files, photos, and videos.
- Built-in Media Server – Allows you to play music, watch videos and view photos from any device on your network.
- More Values – Advanced functions like IPTV, IPv6 compatibility, and Access Point mode bring more values.

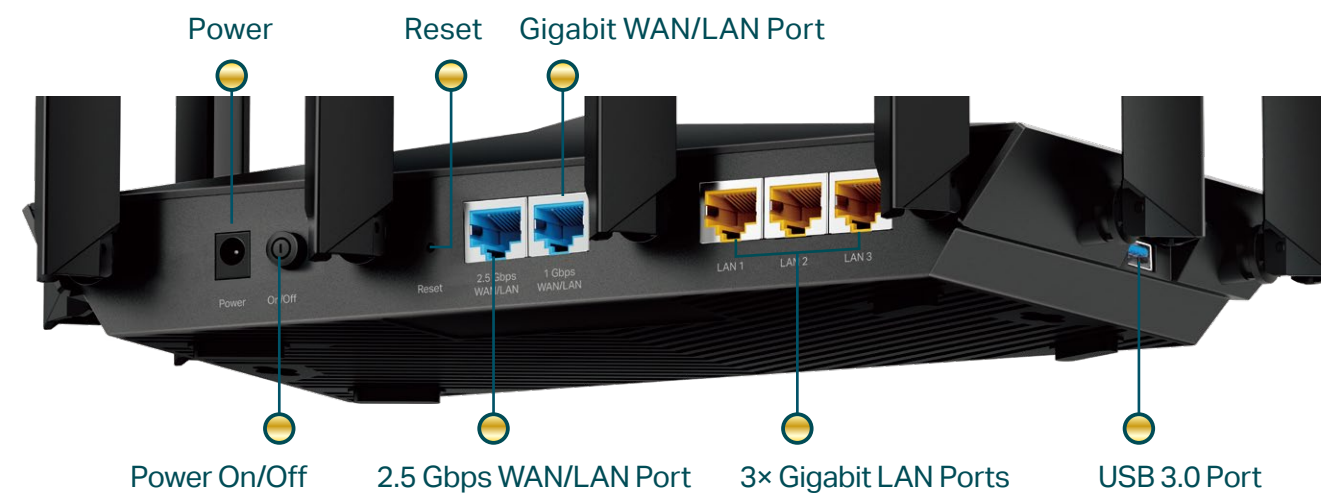
Specifications

Wireless

- Standards: IEEE 802.11ax/ac/n/a 5 GHz, IEEE 802.11ax/n/b/g 2.4 GHz
- WiFi Speeds: 4804 Mbps (5 GHz-1) + 2402 Mbps (5 GHz-2) + 574 Mbps (2.4 GHz)[†]
- WiFi Range: 8× Fixed High-Performance Antennas, Beamforming
- WiFi Capacity: Tri-Band, OFDMA, Airtime Fairness, DFS, 8 Streams
- Working Modes: Router Mode, Access Point Mode

Hardware

- Processor: 1.7 GHz Quad-Core CPU
- Ethernet Ports: 1× 2.5 Gbps WAN/LAN Port, 1× 1 Gbps WAN/LAN Port, 3× 1 Gbps LAN Ports
- USB Support: 1× USB 3.0 Port, 1× USB 2.0 Port
- Buttons: LED On/Off Button, WPS Button, Wi-Fi On/Off Button, Reset Button, Power On/Off Button
- Power: 12 V/3.3 A



Security

- WiFi Encryption: WPA, WPA2, WPA3, WPA/WPA2-Enterprise (802.1x)
- Network Security: SPI Firewall, Access Control, IP & MAC Binding, Application Layer Gateway, HomeShield Security
- Guest Network: 5 GHz Guest Network, 2.4 GHz Guest Network
- VPN Client and Server: OpenVPN, PPTP, L2TP

Software

- Protocols: IPv4, IPv6
- Service Kits: HomeShield
- OneMesh: Supported
- Parental Controls: HomeShield Parental Controls
- WAN Types: Dynamic IP, Static IP, PPPoE, PPTP, L2TP
- Quality of Service: QoS by Device
- Cloud Service: Auto Firmware Upgrade, TP-Link ID, DDNS
- NAT Forwarding: Port Forwarding, Port Triggering, DMZ, UPnP, Virtual Server
- DDNS: TP-Link, NO-IP, DynDNS

Specifications

Physical

- Dimensions (W×D×H): 10.9 × 7.2 × 2.3 in (277.3 × 183.9 × 57.3 mm)
- Package Contents:
 - Wi-Fi Router Archer AX95
 - Power Adapter
 - RJ45 Ethernet Cable
 - Quick Installation Guide

Other

- System Requirements:
 - Internet Explorer 11+, Firefox 12.0+, Chrome 20.0+, Safari 4.0+, or other JavaScript-enabled browser
 - Cable or DSL Modem (if needed)
 - Subscription with an internet service provider (for internet access)
- Certifications: FCC, CE, RoHS
- Environment:
 - Operating Temperature: 0°C~40°C (32°F ~104°F)
 - Operating Humidity: 10%~90% non-condensing



For more information, please visit

<http://www.tp-link.com/products/details/Archer-AX95.html>

or scan the QR code left

Test Data

- WiFi Transmission Power:
 - FCC: ≤30dBm (5.17GHz~5.25GHz); ≤23dBm (5.25GHz~5.35GHz); ≤23dBm (5.49GHz~5.725GHz); ≤28dBm (5.725GHz~5.825GHz); ≤28dBm (2.4GHz)
 - CE: ≤23dBm EIRP (5.17GHz~5.35GHz); ≤30dBm EIRP (5.47GHz~5.725GHz); ≤20dBm EIRP (2.4GHz)
- WiFi Reception Sensitivity:
 - 2.4 GHz:
 - 11ac VHT20 MCS0: -98dBm, 11ac VHT20 MCS11: -66dBm,
 - 11ac VHT40 MCS0: -96dBm, 11ac VHT40 MCS11: -64dBm,
 - 11ax HE20 MCS0: -95dBm, 11ax HE20 MCS11: -64dBm,
 - 11ax HE40 MCS0: -93dBm, 11ac HE40 MCS11: -62dBm
 - 5 GHz:
 - 11ac VHT20 MCS0: -94dBm, 11ac VHT20 MCS11: -63dBm,
 - 11ac VHT40 MCS0: -93dBm, 11ac VHT40 MCS11: -61dBm,
 - 11ac VHT80 MCS0: -89dBm, 11ac VHT80 MCS11: -58dBm,
 - 11ac VHT160 MCS0: -84dBm, 11ac VHT160 MCS11: -53dBm,
 - 11ax HE20 MCS0: -92dBm, 11ax HE20 MCS11: -60dBm,
 - 11ax HE40 MCS0: -89dBm, 11ax HE40 MCS11: -58dBm,
 - 11ax HE80 MCS0: -86dBm, 11ax HE80 MCS11: -55dBm,
 - 11ax HE160 MCS0: -84dBm, 11ax HE160 MCS11: -53dBm

¹Maximum wireless signal rates are the physical rates derived from IEEE Standard 802.11 specifications. Actual wireless data throughput, wireless coverage, and connected devices are not guaranteed and will vary as a result of network conditions, client limitations, and environmental factors, including building materials, obstacles, volume and density of traffic, and client location.

¹Use of Wi-Fi 6 (802.11ax), and features including OFDMA, MU-MIMO, 1024-QAM, and HE160 require clients to also support the corresponding features. The 160 MHz bandwidth may be unavailable in the 5 GHz band in some regions/countries due to regulatory restrictions.

²2.5 Gbps internet speeds require compatible service plans and equipment. 2.5 Gbps and Gigabit ports cannot be concurrently configured as WAN ports.

⁴Saving clients' battery power requires clients to also support the 802.11ax Wi-Fi standard. Actual power reduction may vary as a result of network conditions, client limitations, and environmental factors.

*HomeShield includes the Free Basic Plan. Fees apply for the Pro Plan. Visit tp-link.com/homeshield for more information

**Use of WPA3 requires clients to also support the corresponding feature.

*** This router may not support all the mandatory features as ratified in IEEE 802.11ax specification. Further software upgrades for feature availability may be required.

©2022 TP-Link